

Historic, archived document

Do not assume content reflects current scientific knowledge, policies, or practices.

ARP-GROWN TREES ARE BETTER

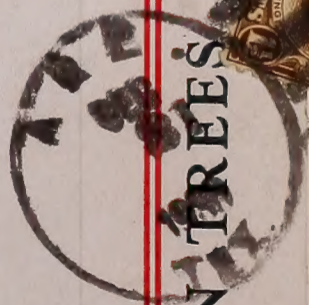
Return Postage Guaranteed.



ARP NURSERY CO.
GROWERS OF
ARP-GROWN TREES
ARP, TEXAS



*U. S. Department of Agriculture
Washington, D. C.*



READ THESE LETTERS!

W. R. COLE
Dry Goods and Groceries
JONAH, TEXAS
June 27, 1930.

Arp Nursery Company, Arp, Texas.
Gentlemen:
I am writing to tell you how well pleased I am with the pecan trees that I bought from you this year. The trees that I set out four months ago have pecans on them now. One of the trees has eight and all the rest have some on them. Trusting that every one has this good of a success, I remain
Yours truly,
W. R. COLE.

M. B. HINTON
Producer and Dealer in
PURE SOUTH TEXAS HONEY
Kennedy, Texas, January 19, 1930.

Arp Nursery Company, Arp, Texas.
Dear Sirs:
Trees arrived in first class condition and were the best and largest I've ever received; others commented on size and healthy appearance. I put them out according to instructions and expect good results. Thanking you for your promptness, I am
Very truly yours,
M. B. HINTON.

INSPECTION

Our nurseries are inspected annually by the Texas Department of Agriculture. Certificates from the State Inspector of Nurseries and Orchards are attached to each and every package that leaves our establishment.

OUR ROOT SYSTEM

You will find our root system to equal that of any nursery in the U.S. We do not claim our trees to be the best, and that there

PRICE LIST OF PAPER SHELL PECANS

PECAN SOILS: Most all of the land in the South-west will grow pecans profitably. Practically all bottom land (unless too wet or sour) is ideal; thirty-five feet is excellent. Plant pecans on land that will grow cotton and corn, for like other crops, pecans will grow fastest where the land is strongest. In all our experience we have found that only stiff clay or thin soil with a hard pan near the surface will make a pecan grove unprofitable.

SIZE OF TREES: In our opinion, a thrifty, well-rooted tree is the first consideration in setting pecan trees. The size of the well-rooted tree is governed by its age. A well-rooted tree three to five feet, usually has a two or three year old root system with a one year graft or bud growth.

VARIETIES: In planting commercial orchards two to five varieties should be used; varieties selected should be governed by your location. For Oklahoma we advise planting Stuart, Success, Schley, Delmas, Moore, Money Maker and Burkett; for Central Texas and Western Oklahoma: Stuart, Success, Schley, Delmas, Burkett, Halbert and Texas Prolific; for Coastal sections: Stuart, Success, Moore and Money Maker; for West Texas and New Mexico: Halbert, Burkett, Texas Prolific with a small per cent of Success, Schley, Delmas and Stuart.

EASTERN VARIETIES—Stuart, Success, Delmas, Schley, Money Maker, Moore

10 ft. up	5.00	3.00	2.50
8 to 10 ft.	3.50	2.50	2.20
7 to 8 ft.	2.60	2.00	1.90
6 to 7 ft.	2.25	1.75	1.65
5 to 6 ft.	1.60	1.50	1.40
4 to 5 ft.	1.20	1.15	1.10
3 to 4 ft.	.95	.90	.85
2 to 3 ft.	.85	.80	.75
1 to 2 ft.	\$0.75	\$0.70	\$0.65
Price Each		10 to 49	50 to 99
		Lots of	Lots of
			100 to 299
			300 up
			Write for prices giving varieties and size trees wanted.

WESTERN VARIETIES—Burkett, Texas Prolific, Halbert

10 ft. up	5.00	3.50	3.25
8 to 10 ft.	4.00	3.00	2.75
7 to 8 ft.	3.50	2.75	2.50
6 to 7 ft.	2.75	2.25	2.10
5 to 6 ft.	2.25	1.80	1.65
4 to 5 ft.	1.75	1.60	1.50
3 to 4 ft.	1.40	1.35	1.20
2 to 3 ft.	1.20	1.10	1.00
1 to 2 ft.	\$1.00	\$0.90	\$0.80
Price Each		10 to 49	50 to 99
		Lots of	Lots of
			100 to 299
			300 up
			Write for prices giving varieties and size trees wanted.

These three varieties are hard to propagate, that is, the buds and grafts are hard to get to live, also the Halbert and Texas Prolific make a willow growth and it is almost impossible to grow them straight, making them cost us almost twice as much per tree to grow as the Eastern varieties. Therefore, we are compelled to get more for these varieties. You will find them listed in the separate price list above. All three make beautiful trees and are worth much more than the list price.

SHOWING THE ROOT SYSTEM OF ONE OF OUR 2 1/2 YEAR OLD PECAN TREES



G. A. Kelley, Pres. Joe C. Denman, 2nd V.-P.
N. D. Sands, 1st V.-P. N. R. Miller, Treas.
W. C. Hall, Sec'y and Gen'l Mgr.
LUFKIN CHAMBER OF COMMERCE
Lufkin, Texas
February 4, 1930.
Arp Nursery Company, Arp, Texas.
Gentlemen:
Enclosed you will find our check for \$103.80 to cover the nursery stock shipped to Lufkin for the purpose of supplying the farm boys, and also for Mr. Lagrone's personal use.
We are glad to report that this stock arrived in nice condition, and is very satisfactory in quality. We thank you for the reasonable prices for this orchard stock, and trust that it may result in future shipments from this section.
Yours truly,
W. C. HALL, Secretary.
WCH:LBK

is no other equal to ours, but we do claim that our root system equals that of any nursery. Our trees are far superior to trees grown in other climates and soils and under other methods of cultivation and fertilization. Read our guarantee.

SHIPPING SEASON

Begins about November 15th and extends to April 1st, but it is better to transplant trees as soon as possible after leaves have shed. A tree transplanted in early fall will have grown by spring sufficient roots to give it a quick and rapid growth, as soon as actual vegetation begins.

TERMS

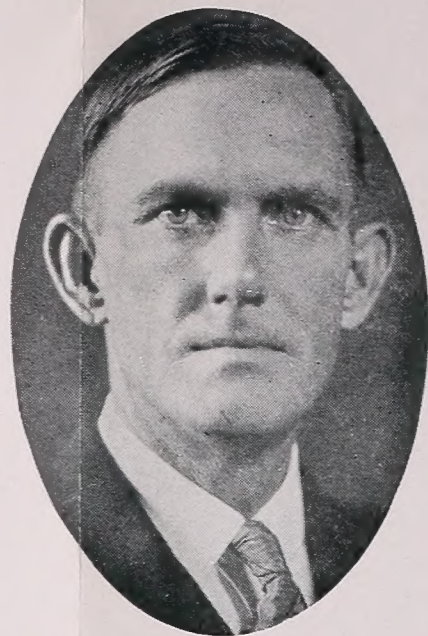
On all orders booked before November 15th a deposit of 25 per cent must be paid on November 1, and the balance when trees are shipped, or we will ship balance C. O. D. if preferred. In ordering after November 15th, 25 per cent must accompany order and balance when trees are shipped, or C. O. D. if preferred.

DEMAND ARP-GROWN TREES

Our Guarantee

WE GUARANTEE our trees to be just as represented and our root system to equal that of any nursery in the world. If, upon receipt of trees, you do not find them to be as represented, return them and we will gladly furnish satisfactory trees or refund the purchase price. We do everything in our power to keep our stock pure and true to name; however, we realize that errors are possible. In the event that any nursery stock should prove untrue to name, and purchaser should thereby sustain damage, we hereby agree, upon proper proof, to replace such stock as may prove untrue to name under which it is sold, or to refund purchase price, refunding or replacing to be at our option.

ARP NURSERY COMPANY.



L. B. DEAN, Manager



A VIEW OF OUR PEACH STOR...

Plant Fruit Trees and Pecans

WITHOUT doubt the time has come when we must plant something on our farms besides cotton, wheat, etc., as an over-production of these crops has caused the price to be so low until we can not realize cost from them. Considering this condition in connection with the fact that there is never a sufficient supply of any type of fruits and pecans with which to meet the demand at a fair price, what would be more reasonable from a standpoint of profit, than to plant out an orchard on a part of your farm to the types and varieties of fruits and nuts that are adapted to your territory? We will be glad to advise you of the types and varieties that are best suited to your immediate locality. If you don't have room for a commercial orchard, you can at least plant a selection of different types for home use; you owe yourself and your family this much, for you know fresh and canned fruits certainly help to cut that grocery bill. Don't wait any longer, but write to us now and let us help you select the varieties you need for the planting of that orchard this season.

MR. DEAN began actual field work in the nursery twenty-seven years ago, working in several of the largest nurseries in different sections of the Southwest. Through his knowledge, gained by trial, practice and experience in the Southwest, the ARP NURSERY COMPANY can today serve its trade with "OUR BETTER ROOTED TREES" adaptable to conditions in the Southwest.

ARP NURSERY

ARP, Smith County

Arp-Grown Trees

ARP soil and climate are both especially adapted to the growing of nursery stock, the root system of Arp grown trees is in class A-1. We know this to be a fact and some of the other large nurserymen of the south are learning it to be and are now growing a part of their stock in Smith County, while others, with their offices and nurseries located at other places, are growing part of their stock at Arp.

There is nothing more important in the selection of your nursery stock than the root system. A tree with poorly developed roots cannot grow rapidly and develop into the bearing stage as quickly as a tree that has a well developed root system.

The lateral roots drink in the moisture and assimilate the plant food in the soil, if they fail to obtain an adequate supply of moisture and plant food, they are like a child that is poorly nourished, sickly and stunted.

With our twenty years of experience in the nursery and fruit business and with our special methods of cultivation and fertilization to develop our root system, with our soil and climate aiding us, you can readily see why our trees are preferred by those who know the quality of trees we produce.

Do not take any chances, buy the best. DEMAND ARP GROWN TREES.

BOOK YOUR ORDER NOW

There is a big demand for trees this coming season and you had better book your order now, or just as soon as possible, so we can reserve for you the sizes and varieties wanted.



THE DELICIOUS APPLE

If you don't care to grow apples and pears commercially, you should at least have a few trees of each for home use, as both of these fruits are exceptionally healthy.

THE PAPER SHELL PECAN

Today the most fascinating, profitable and permanent proposition before the South is the growing of paper shell pecans. The trees are easily grown if properly cared for, and there is no other nut in the world that brings the prices the PAPER SHELL PECAN does, with the demand rapidly increasing. Its quality, flavor and richness in food value have no equal.

A SAFE INVESTMENT—NO BETTER KNOWN

The pecan is the native tree for the South, trees one hundred years old and older are still producing big crops.

Young pecan trees increase in value each year from date of planting, causing your investment to increase in value and at the same time paying you and your children and your children's children each season dividends with its paper shell nuts which will increase each year. We know of no other investment half as safe. No other investment that would increase in value half as fast, no other investment will pay one-half the dividends, as a well cared for pecan grove set with our paper shell varieties.

If an acre of your land set to pecans, the paper shell varieties and your income from these trees brought you \$500 to \$1,000 per year, with an increase from year to year in value, would you sell at \$1,000 per acre? Some sell at these prices and some refuse.

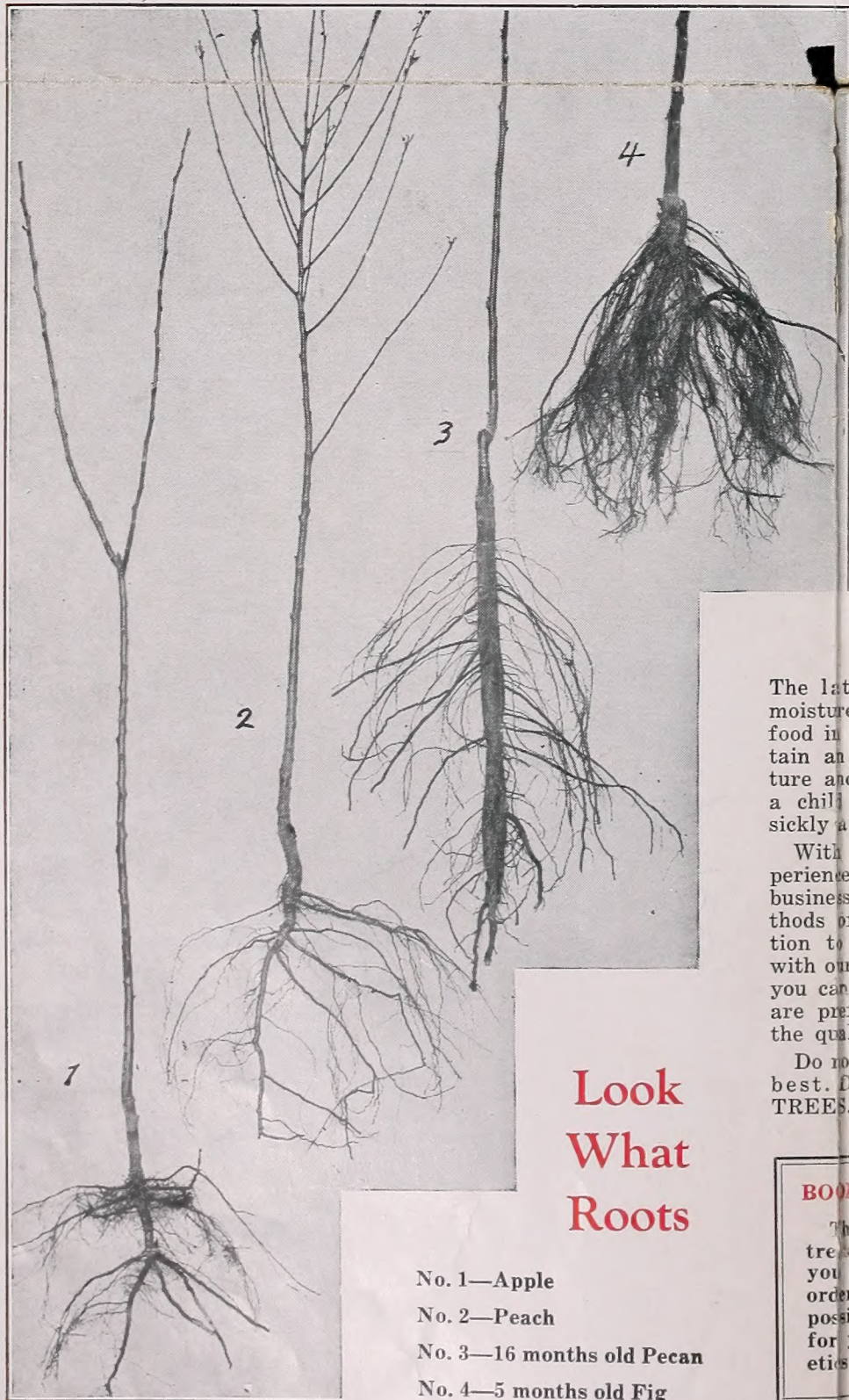
L. S. SARTAIN, President
JAS. L. WILSON,

Arp State

Capital Stock \$100,000
Surplus \$10,000

TO WHOM IT MAY CONCERN

This is to certify that we are the ARP NURSERY COMPANY of this city, and that we have been in business for the past several years and are absolutely reliable in every respect. We are under no contract or obligation to anyone, and we believe that our goods are just as represented, and we are glad to receive the value received.



Look What Roots

- No. 1—Apple
- No. 2—Peach
- No. 3—16 months old Pecan
- No. 4—5 months old Fig



THE W...

Plums

Plums are one of the trees that often begin bearing in the first year. We know of trees producing \$20.00 per tree, and crops in seventeen years 15 by 15 feet; which these figures an acre to \$2,800 per acre or figure on several acres per acre, but you will pay you well. Write for a nice revenue.

OUR BEST

are the thousands throughout Texas and grades, service and bring us new varieties where our

BECAUSE THEY ARE BETTER

Here is Why

WE HAVE hundreds of thousands of trees growing in our nurseries, all trees that do not come up to standard, are dug from our nursery rows and destroyed, we only graft and bud trees that are healthy and strong, which enables us to give our customers TREES, NOT SCRUBS, BUT TREES with one of the best lateral root systems that can be grown. Our trees are sold under guarantee, see our guarantee on opposite side.

VISIT OUR NURSERY

WE are not connected in any way with other nurseries growing stock here, or other places. Our nurseries are all in and near Arp, offices and packing shed located here, we have no branch offices nor nursery located at other points.

We have one of the most up-to-date systems of handling our stock through the growing season, also shipping season. We have at present about eighty acres in nursery stock and if you are in the market for trees this season, if possible, we would be glad to have you visit us. We have had men to visit us and place large orders for pecan, peach, plum and other trees, after they had visited other nurseries.



AS IT LOOKS IN NURSERY



D. D. ALEXANDER, Sec'y and Treas.

MR. ALEXANDER has been connected with the Arp Nursery Company since its organization and has made a careful study of soils and climatic conditions and varieties that are adapted to the different sections of the Southwest. Through his knowledge, the handling of orders, correspondence and his general business methods, he has greatly contributed to the upbuilding of this institution's reputation for service and square dealing.

NURSERY CO.

County, TEXAS

ent F. L. SARTAIN, Cashier
LSON, Ass't Cashier

State Bank

Stock \$20,000.00
plus \$10,000.00

Arp, Texas, November 5, 1930.

CONCERN:

at we are personally acquainted with the ARP NURSERY COMPANY. We take pleasure in recommending their services to our customers of this bank for we find them to be absolutely reliable, and we consider any business they assume absolutely good, and we will endeavor to deliver to you, knowing them to be experienced and capable of giving

Respectfully,

F. L. SARTAIN, Cashier.



A PEACH ORCHARD A VALUABLE ASSET

Setting trees 18 by 18 feet gives 131 trees per acre. Well cared for trees will produce from one to three bushels per tree each season and prices range from \$1.50 to \$3.00 per bushel, which gives you \$393.00 to \$1,179.00 per acre each year. A ten acre orchard will pay you \$3,930.00 to \$11,790.00 income each year on peaches. You will find listed on opposite page varieties ripening from May to October, the best varieties for our southern climate for commercial and home orchards. Of course the Elberta has been the leading variety for commercial planting, but our experience is that the early varieties on our local market bring better prices.

BERRIES PAY \$500.00 PER ACRE

Dewberries, blackberries and strawberries, if properly handled and cared for will pay from \$300 to \$500 per acre each spring, yielding crop second year from planting, in other words, you set berries this winter and this coming spring a year hence, you will begin reaping your profit from these small fruits.

LARGE PECAN INCOME

Setting trees 40 by 40 feet gives 27 trees to the acre; at the age of ten years, fifty pounds of nuts per tree, at 75 cents per pound, this means a net income of \$1,012.50 per acre, with a larger income each year thereafter as the trees become larger and more productive. This is figured on a ten year old tree, but our trees, if properly cared for, will begin paying a nice revenue from five to six years from date of setting.

SUCCESS WITH PECANS

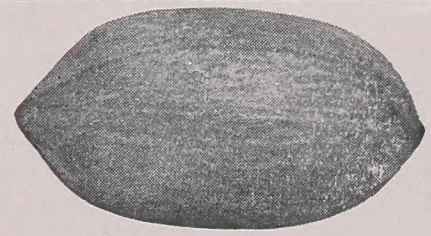
SUCCESS or failure depends almost entirely on the quality of trees you plant. The root system of a young pecan tree gathers up the plant food and moisture from mother earth, and a tree without a good supply of lateral roots and a reasonable amount of tap root gets little food supply, little moisture and naturally makes a poor growth, will barely live, produces few nuts, be unprofitable—in fact, a complete failure. With a good lateral root system and a reasonable amount of tap root there is sufficient food supply, plenty of moisture makes a fast growth, being healthy it will live and bear early, producing big crops, hence big profits meaning success and wealth.

EASTERN VARIETIES



STUART

The Stuart is the leading variety, being suited to more sections of the country than any other variety. The nuts are large to very large, usually well filled, medium to heavy bearers.



DELMAS

Nut large to very large, shell moderately thin, kernel plump, heavy bearer. Tree is vigorous with beautiful foliage.



SUCCESS

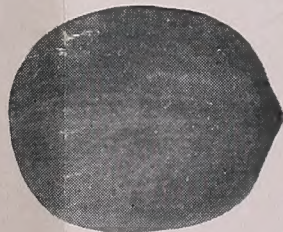
The Success is a first class pecan. Nut is large to medium, thin shell, cracks well. The kernel is plump and very heavy and of excellent flavor; strong growing tree, early bearer and is rapidly gaining prominence.



SCHLEY

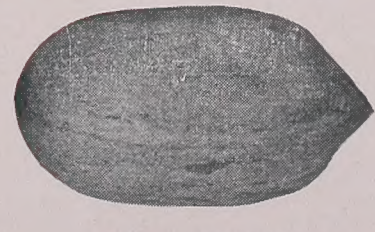
Very thin shell nut, large, plump kernel, fine flavor; rapidly growing tree. Nuts sell for highest market price, but not quite so prolific as some of the other varieties. However, the Schley is an ideal pecan, and its quality makes up for its shy bearing.

WESTERN VARIETIES



BURKETT

One of the favorites for West Texas, trees very healthy and regular bearers, medium size nut, well filled and good flavor.



TEXAS PROLIFIC

Nut large, shell of medium thickness, kernel plump, rich and sweet; it is a heavy and early producer; trees healthy and fast growing.



HALBERT

One of the most prolific of all varieties, very early bearer, medium size nut, very thin shell, excellent flavor. Young trees are willowy in appearance, but become straight as they grow older. Nuts ripen early.

OTHER EASTERN VARIETIES

Money Maker—Medium size; plump kernel, good quality with a sweet flavor, quite prolific, adapted to northern area of eastern varieties.

Moore—Medium size nut, thin shell, good flavor; very productive fast growing tree and one of the earliest to mature.

THE WIGOOSE PLUM

Pay Well

most luscious crops of all fruits and second year after planting. Their owners from \$8.00 to \$10.00 have missed only one or two trees. Trees can be set as close as 14 feet which gives you 140 trees per acre. At \$1.20 per acre you will pay from \$1,120 to \$1,500 per acre. Of course you cannot get more than \$1,120 per acre for plums paying this amount. We strong believers in plums.

ADVERTISERS

satisfied patrons we have in the adjoining States. Our trees have a lateral root system to our stock and repeat orders from communities are known.

DEMAND ARP-GROWN TREES BECAUSE THEY ARE BETTER

Our Guarantee

WE GUARANTEE our trees to be just as represented and our root system to equal that of any nursery in the world. If, upon receipt of trees, you do not find them to be as represented, return them and we will gladly furnish satisfactory trees or refund the purchase price. We do everything in our power to keep our stock pure and true to name; however, we realize that errors are possible. In the event that any nursery stock should prove untrue to name, and purchaser should thereby sustain damage, we hereby agree, upon proper proof, to replace such stock as may prove untrue to name under which it is sold, or to refund purchase price, refunding or replacing to be at our option.

ARP NURSERY COMPANY.



L. B. DEAN, Manager



A VIEW OF OUR PEACH STOCK AS IT LOOKS IN NURSERY



D. D. ALEXANDER, Sec'y and Treas.

Here is Why

WE HAVE hundreds of thousands of trees growing in our nurseries, all trees that do not come up to standard, are dug from our nursery rows and destroyed, we only graft and bud trees that are healthy and strong, which enables us to give our customers TREES, NOT SCRUBS, BUT TREES with one of the best lateral root systems that can be grown. Our trees are sold under guarantee, see our guarantee on opposite side.

VISIT OUR NURSERY

WE are not connected in any way with other nurseries growing stock here, or other places. Our nurseries are all in and near Arp, offices and packing shed located here, we have no branch offices nor nursery located at other points.

We have one of the most up-to-date systems of handling our stock through the growing season, also shipping season. We have at present about eighty acres in nursery stock and if you are in the market for trees this season, if possible, we would be glad to have you visit us. We have had men to visit us and place large orders for pecan, peach, plum and other trees, after they had visited other nurseries.

Plant Fruit Trees and Pecans

WITHOUT doubt the time has come when we must plant something on our farms besides cotton, wheat, etc., as an over-production of these crops has caused the price to be so low until we can not realize cost from them. Considering this condition in connection with the fact that there is never a sufficient supply of any type of fruits and pecans with which to meet the demand at a fair price, what would be more reasonable from a standpoint of profit, than to plant out an orchard on a part of your farm to the types and varieties of fruits and nuts that are adapted to your territory? We will be glad to advise you of the types and varieties that are best suited to your immediate locality. If you don't have room for a commercial orchard, you can at least plant a selection of different types for home use; you owe yourself and your family this much, for you know fresh and canned fruits certainly help to cut that grocery bill. Don't wait any longer, but write to us now and let us help you select the varieties you need for the planting of that orchard this season.

MR. DEAN began actual field work in the nursery twenty-seven years ago, working in several of the largest nurseries in different sections of the Southwest. Through his knowledge, gained by trial, practice and experience in the Southwest, the ARP NURSERY COMPANY can today serve its trade with "OUR BETTER ROOTED TREES" adaptable to conditions in the Southwest.

Arp-Grown Trees

ARP soil and climate are both especially adapted to the growing of nursery stock, the root system of Arp grown trees is in class A-1. We know this to be a fact and some of the other large nurserymen of the south are learning it to be and are now growing a part of their stock in Smith County, while others, with their offices and nurseries located at other places, are growing part of their stock at Arp.

There is nothing more important in the selection of your nursery stock than the root system. A tree with poorly developed roots cannot grow rapidly and develop into the bearing stage as quickly as a tree that has a well developed root system. The lateral roots drink in the moisture and assimilate the plant food in the soil, if they fail to obtain an adequate supply of moisture and plant food, they are like a child that is poorly nourished, sickly and stunted.

With our twenty years of experience in the nursery and fruit business and with our special methods of cultivation and fertilization to develop our root system, with our soil and climate aiding us, you can readily see why our trees are preferred by those who know the quality of trees we produce.

Do not take any chances, buy the best. DEMAND ARP GROWN TREES.

BOOK YOUR ORDER NOW

There is a big demand for trees this coming season and you had better book your order now, or just as soon as possible, so we can reserve for you the sizes and varieties wanted.



THE DELICIOUS APPLE

If you don't care to grow apples and pears commercially, you should at least have a few trees of each for home use, as both of these fruits are exceptionally healthy.

THE PAPER SHELL PECAN

Today the most fascinating, profitable and permanent proposition before the South is the growing of paper shell pecans. The trees are easily grown if properly cared for, and there is no other nut in the world that brings the prices the PAPER SHELL PECAN does, with the demand rapidly increasing. Its quality, flavor and richness in food value have no equal.

A SAFE INVESTMENT—NO BETTER KNOWN

The pecan is the native tree for the South, trees one hundred years old and older are still producing big crops.

Young pecan trees increase in value each year from date of planting, causing your investment to increase in value and at the same time paying you and your children and your children's children each season dividends with its paper shell nuts which will increase each year. We know of no other investment that would increase in value half as fast, no other investment will pay one-half the dividends, as a well cared for pecan grove set with our paper shell varieties.

If an acre of your land set to pecans, the paper shell varieties and your income from these trees brought you \$500 to \$1,000 per year, with an increase from year to year in value, would you sell at \$1,000 per acre? Some sell at these prices and some refuse.

L. S. SARTAIN, President F. L. SARTAIN, Cashier
JAS. L. WILSON, Ass't Cashier

Arp State Bank

Capital Stock \$20,000.00
Surplus \$10,000.00

Arp, Texas, November 5, 1930.

TO WHOM IT MAY CONCERN:

This is to certify that we are personally acquainted with the ARP NURSERY COMPANY of this city, and take pleasure in recommending their company. They have been customers of this bank for the past several years and we find them to be absolutely reliable in every respect, and we consider any contract or obligation they assume absolutely good, furthermore, we believe they will endeavor to deliver goods just as represented, knowing them to be experienced in their line of work and capable of giving value received.

Respectfully,
F. L. SARTAIN, Cashier.



A PEACH ORCHARD A VALUABLE ASSET

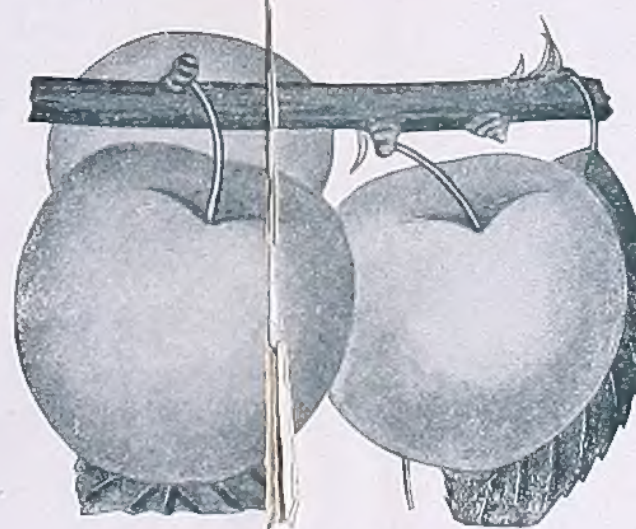
Setting trees 18 by 18 feet gives 131 trees per acre. Well cared for trees will produce from one to three bushels per tree each season and prices range from \$1.50 to \$3.00 per bushel, which gives you \$393.00 to \$1,179.00 per acre each year. A ten acre orchard will pay you \$3,930.00 to \$11,790.00 income each year on peaches. You will find listed on opposite page varieties ripening from May to October, the best varieties for our southern climate for commercial and home orchards. Of course the Elberta has been the leading variety for commercial planting, but our experience is that the early varieties on our local market bring better prices.

BERRIES PAY \$500.00 PER ACRE

Dewberries, blackberries and strawberries, if properly handled and cared for will pay from \$300 to \$500 per acre each spring, yielding crop second year from planting, in other words, you set berries this winter and this coming spring a year hence, you will begin reaping your profit from these small fruits.

LARGE PECAN INCOME

Setting trees 40 by 40 feet gives 27 trees to the acre; at the age of ten years, fifty pounds of nuts per tree, at 75 cents per pound, this means a net income of \$1,012.50 per acre, with a larger income each year thereafter as the trees become larger and more productive. This is figured on a ten year old tree, but our trees, if properly cared for, will begin paying a nice revenue from five to six years from date of setting.



THE WILD GOOSE PLUM

Plums Pay Well

Plums are one of the surest crops of all fruits and often begin bearing the second year after planting. We know of trees paying their owners from \$8.00 to \$20.00 per tree, and have missed only one or two crops in seventeen years. Trees can be set as close as 15 by 15 feet; which gives you 140 trees per acre. At these figures an acre of plums will pay from \$1,120 to \$2,800 per acre each year. Of course you cannot figure on several acres in plums paying this amount per acre, but you will find a few acres set to plums will pay you well. We are strong believers in plums for a nice revenue.

OUR BEST ADVERTISERS

are the thousands of satisfied patrons we have throughout Texas and adjoining States. Our grades, service and the root system to our stock bring us new and repeat orders from communities where our products are known.

SUCCESS WITH PECANS

SUCCESS or failure depends almost entirely on the quality of trees you plant. The root system of a young pecan tree gathers up the plant food and moisture from mother earth, and a tree without a good supply of lateral roots and a reasonable amount of tap root gets little food supply, little moisture and naturally makes a poor growth, will barely live, produces few nuts, be unprofitable—in fact, a complete failure. With a good lateral root system and a reasonable amount of tap root there is sufficient food supply, plenty of moisture makes a fast growth, being healthy it will live and bear early, producing big crops, hence big profits meaning success and wealth.

EASTERN VARIETIES



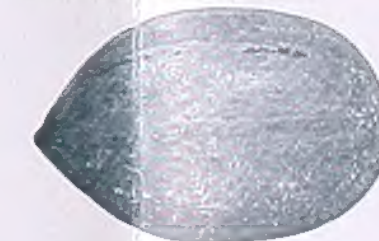
STUART

The Stuart is the leading variety, being suited to more sections of the country than any other variety. The nuts are large to very large, usually well filled, medium to heavy bearers.



DELMAS

Nut large to very large, shell moderately thin, kernel plump, heavy bearer. Tree is vigorous with beautiful foliage.



SUCCESS

The Success is a first class pecan. Nut is large to medium, thin shell, cracks well. The kernel is plump and very heavy and of excellent flavor; strong growing tree, early bearer and is rapidly gaining prominence.



SCHLEY

Very thin shell nut, large, plump kernel, fine flavor; rapidly growing tree. Nuts sell for highest market price, but not quite so prolific as some of the other varieties. However, the Schley is an ideal pecan, and its quality makes up for its shy bearing.

WESTERN VARIETIES



BURKETT

One of the favorites for West Texas, trees very healthy and regular bearers, medium size nut, well filled and good flavor.



TEXAS PROLIFIC

Nut large, shell of medium thickness, kernel plump, rich and sweet; it is a heavy and early producer; trees healthy and fast growing.



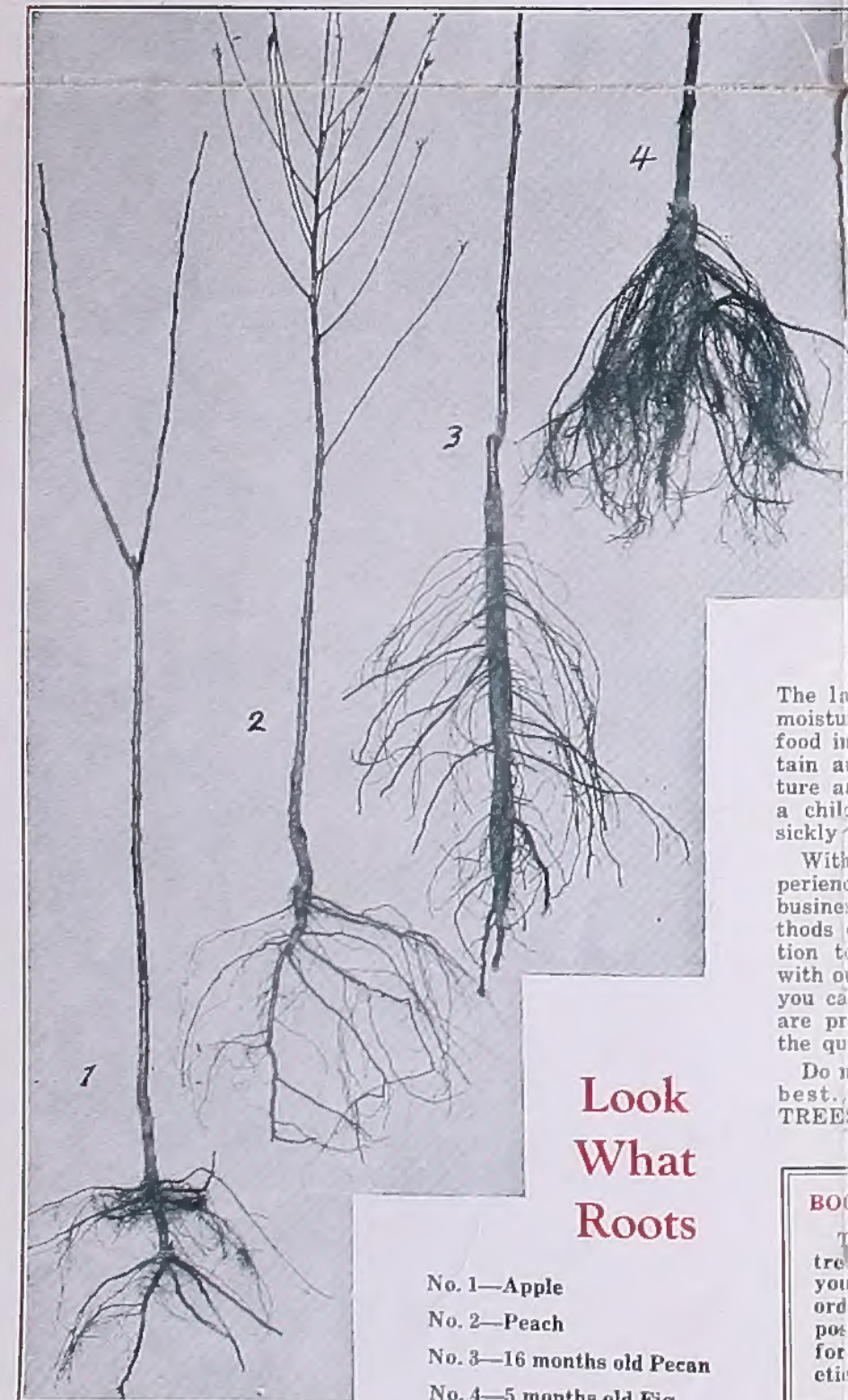
HALBERT

One of the most prolific of all varieties, very early bearer, medium size nut, very thin shell, excellent flavor. Young trees are willowy in appearance, but become straight as they grow older. Nuts ripen early.

OTHER EASTERN VARIETIES

Money Maker—Medium size; plump kernel, good quality with a sweet flavor, quite prolific, adapted to northern area of eastern varieties.

Moore—Medium size nut, thin shell, good flavor; very productive fast growing tree and one of the earliest to mature.



Look What Roots

- No. 1—Apple
- No. 2—Peach
- No. 3—16 months old Pecan
- No. 4—5 months old Fig

VARIETIES AND PRICES OF OUR STOCK

Remember Arp-Grown Trees Are Better

PEACHES

MAY (Varieties)

Mayflower (Semi-Cling)—White with red cheek, one of the best early peaches, good shipper. Ripens first of May.
Victor (Semi-Cling)—Well known variety, ripens first of May.
Early Wheeler (Semi-Cling)—Cream with red cheek, large and handsome, extra fine for commercial purposes. Ripens last of May.

JUNE (Varieties)

Arp Beauty (Semi-Cling)—Yellow with bright blush, highly flavored. Ripens first of June.
Mamie Ross (Semi-Cling)—Large, white with red cheek, one of the best varieties. Ripens 10th to 15th of June.
Carmen (Semi-Cling)—A large, white with deep blush, skin tough, juicy, brings fancy prices on market. Ripens 15th.
Texas King (Semi-Cling)—Very large, white, red cheek, juicy and good. Ripens 15th.
Hiley (Freestone)—Good size, well colored with red, best of quality, a good shipper and prolific bearer. Ripens 20th.
Slappy (Freestone)—Yellow, delicious flavor, a fine peach. Ripens 20th.

JULY (Varieties)

Elberta (Freestone)—The old, well known variety. Ripens July 5th to 10th.
Bell of Georgia—Very large, white with red cheek, an all round peach, firm. Ripens 15th.
Chinese Cling (Cling)—A well known variety, juicy and sweet.
J. H. Hale (Freestone)—Fruit large, deep golden, excellent flavor, one of the best varieties. Ripens 20th.

AUGUST (Varieties)

Augberta (Freestone)—Like the Elberta in size, looks and flavor, a good market peach. Ripens 5th to 10th.
Lemon Cling (Cling)—Large oblong, yellow with red cheek, flesh yellow.
Mixon Cling (Cling)—Large, yellowish-white, with red cheek, delicious flavor, a beauty. Ripens first of August.
Heath Cling (Cling)—Large, creamy white, flesh firm. Ripens last Aug.
Henrietta (Cling)—Large, yellow, flesh firm. Ripens last August.

OCTOBER (Varieties)

Stensons October (Cling)—White, a well known variety.

SPECIAL VARIETIES

(See Special Prices)

Late Arp Beauty (Semi-Cling)—Large, yellow with red cheek, delicious flavor, a good shipper and brings fancy prices on the market. Ripens June 10th.

Cling Elberta (Cling)—Larger than Elberta and better colored, yellow with red cheek, brings fancy prices on the market, good shipper, highly flavored. Ripens 5 to 10 days later than Elberta.

Money Maker (Cling)—Extra large, Indian type, a very good commercial and home variety. Ripens middle of August.

Red Indian (Cling)—Red cling, the old time Indian peach. Ripens Aug.
Yellow Indian (Cling)—One of the best varieties for home orchards, good size and flavor. Ripens in August.

Everbearing (Freestone)—Indian type, ripens in three crops first in July, last about September 1st. A good one for home orchards.

Pickens October (Cling)—Extra large, yellow, smooth, delicious flavor. A new variety, which has proven the best of all October peaches.

Special prices on special varieties: Late Arp Beauty, Cling Elberta, Money Maker, Red Indian, Yellow Indian, Everbearing, Pickens October. Two to three ft., \$.30; three to four ft., \$.40; four to five ft., \$.50; five to seven ft., two year old, \$.75.

STANDARD VARIETIES

Size of Trees	Price Each Lots of 1 to 25	Price Each Lots of 25 to 100	Price Each Lots of 100 to 1,000
18 to 24 in.	\$0.17½	\$0.12½	\$0.10
2 to 3 ft.	.20	.15	.12½
3 to 4 ft.	.25	.17½	.15
4 to 5 ft.	.35	.25	.20
5 to 7 ft. (2 yrs. old)	.60	.50	

PLUMS

MAY (Varieties)

Excelsior—Fruit medium to large, reddish purple, flesh firm, tree strong grower, most valuable southern plum.
Six Weeks or Happiness—Large, yellow with red, a very profitable plum.

JUNE (Varieties)

Milton—Deep red, blooms late, good bearer.
Francis—A handsome yellow of high merits, tree very hardy.
Wild Goose—An old well known variety.
Pools Pride—Tree hardy, a good bearer, fruit red, popular for preserves and jelly.
Gonzales—Large, brilliant red, delicious and good flavor.
Compass Cherry—Cross between the cherry and plum, fruit medium size, color reddish yellow.

JULY (Varieties)

Gold—Large, yellow with red cheek, a good bearer and one of the best.
America—A large yellow with red cheek, trees fast growers, a fine commercial plum.
Burbank—An old variety, fruit red dotted with yellow, a good bearer.
Botan or Abundance—Flesh yellow, a good shipper and an abundant bearer.

Hytankio—Large, red, flesh dark yellow, one of the best varieties.

AUGUST (Varieties)

Wickson—Fruit very large, an old variety, very popular.

SEPTEMBER (Varieties)

Golden Beauty—Golden when ripe, a very heavy bearer, a good one for preserves and jelly.

PRICES OF PLUMS (F. O. B. ARP, TEXAS)

Size of Trees	Price Each Lots of 1 to 25	Price Each Lots of 25 to 100	Price Each Lots of 100 to 1,000
18 to 24 in.	\$0.20	\$0.17½	\$0.15
2 to 3 ft.	.25	.20	.17½
3 to 4 ft.	.30	.22½	.20
4 to 5 ft.	.40	.30	.25
5 to 7 ft. (2 yrs. old)	.75	.60	

APRICOTS

Early Golden—Medium size, yellow, freestone, rich and juicy.
Cluster—Medium, golden, delicious flavor, a good bearer.
Moorpark—Large, yellow with green, flesh bright orange, separates readily from seed.

PRICES OF APRICOTS (F. O. B. ARP, TEXAS)

One to two ft., 35c each; two to three ft., 50c each; three to four ft., 60c each; four to five ft., 75c each.

APPLES

Red June—One of the best early apples, red, flesh white and crisp, a good table and market apple.

Yellow Transparent—Fruit large, yellow, good quality, tree very hardy and bears young. Ripens in June.

Jonathan—Fruit brilliant red, delicious flavor, one of the surest bearers, tree hardy, a splendid variety for home orchard. Ripens in September.

Mammoth Black Twig—Fruit yellow shaded with red, a good bearer and tree very hardy. Ripens September to November.

Winesap—An old variety, well known, one of the best of keepers, good for home and commercial orchards. Ripens from September to October.

Arkansas Black—Fruit dark red, medium size, excellent flavor. Ripens in October.

Delicious—Fruit large, dark red, flesh crisp and melting, juicy, highest quality, now taking first place for commercial and home orchards. Ripens in late fall.

PRICES OF APPLES (F. O. B. ARP, TEXAS)

Size of Trees	Price Each Lots of 1 to 25	Price Each Lots of 25 to 100	Price Each Lots of 100 to 1,000
1 to 2 ft.	\$0.25	\$0.20	\$0.17½
2 to 3 ft.	.30	.25	.20
3 to 4 ft.	.40	.30	.25
4 to 5 ft.	.60	.45	.30

PEARS

Bartlett—Fruit yellow, juicy, delicious flavor, a very popular variety. Ripens July to August.

Garber—Fruit large, yellow in color with red cheek, a good keeper, a choice variety for the South. Ripens in August.

Keiffer—Fruit very large, grown successfully in all sections, trees resist blight, very vigorous, immensely productive. Ripens in September.

PRICES OF PEARS (F. O. B. ARP, TEXAS)

Size of Trees	Price Each Lots of 1 to 25	Price Each Lots of 25 to 100	Price Each Lots of 100 to 1,000
1 to 2 ft.	\$0.35	\$0.30	\$0.25
2 to 3 ft.	.50	.40	.30
3 to 4 ft.	.60	.50	.40
4 to 5 ft.	.75	.60	.50

FIGS

Magnolia—Fruit large, pale violet, excellent flavor, bears on one year stem, the leader for commercial orchards and a good home variety.

Celestial—Fruit medium in size, delicious flavor, good bearer, one of the best varieties for north of coast section of Texas.

PRICES OF FIGS (F. O. B. ARP, TEXAS)

Size of Trees	Price Each Lots of 1 to 12	Price Each Lots of 12 to 25	Price Each Lots of 25 to 100
1 to 2 ft.	\$0.35	\$0.25	\$0.20
2 to 3 ft.	.50	.35	.25
3 to 4 ft.	.60	.50	.35
4 to 5 ft.	.75	.60	.45

GRAPES

Moore's Early—Fruit large, black, good flavor, fine market grape, vine vigorous. Ripens in June.

Concord—Best known of all varieties, fruit large, black. Ripens in July.

Niagara—Fruit large, greenish white, large cluster, good quality. Ripens first of July.

Delaware—Fruit small, compact cluster, juicy and sweet, standard variety for table and market use. Ripens last of July.

Carman—Vine very thrifty, does well on all kinds of soil, large compact cluster, one of the best varieties for Texas. Ripens about August 10th.

PRICES OF GRAPES (F. O. B. ARP, TEXAS)

Plants (well rooted and branched) 30c each; in lots of 12 to 25, 25c each; in lots of 25 to 100, 20c each.

BLACKBERRIES

McDonald—Medium size, firm, good shipper, plant other berries near it to pollinize; it is early. Ripens with the Austin Dewberry.

PRICES OF BLACKBERRIES (F. O. B. ARP, TEXAS)

Field grown strong plants:

Dozen	100	1,000
\$1.00	\$6.00	\$20.00

DEWBERRIES

Austin Mae—We have found this berry by far the best of all varieties, therefore, we offer only this variety, it is very large, much larger than our wild dewberry, it blooms late. Ripens a little later than our native dewberry.

PRICES OF DEWBERRIES (F. O. B. ARP, TEXAS)

Field grown strong plants:

Dozen	100	1,000
\$0.75	\$4.00	\$12.50

STRAWBERRIES

Excelsior—Very early, medium size, firm; good shipper, plants healthy.

Improved Klondike—Medium early, blood red, firm, one of the best shippers.

Improved Lady Thompson—Early, a delicious flavor, good color and shipper.

Aroma—Best of all late strawberries, large, delicious flavor and good bearer.

PRICES OF STRAWBERRIES (F. O. B. ARP, TEXAS)

All strong plants:

Lots of 25	100	500	1,000
\$0.50	\$1.00	\$3.00	\$5.00

ROSES

Columbia—A beautiful pink. **Crusader**—Crimson red. **Butterfly**—Large, brilliant pink. **Dudley Cross**—Pale soft yellow. **Meator**—Intense velvet crimson. **Paul Neyron**—Pink. **Lady Detroit**—Shell pink. **Luxembourg**—Yellow. **J. L. Mock**—Varying from bright red from the outside of petals to silvery white inside. **Sunburst**—A sulphur yellow. **Golden Ophelia**—A bright golden yellow. **Premier**—Dark pink. **American Beauty**—Deep pink. **Etoile De Lyon**—Golden yellow. **Lady Hillingdon**—Deep yellow. **Frau Karl Druschki** (White American beauty) is snow white. **Etoile De France**—Red velvet. **Kaiserin Augusta Victoria**—Pure white. **Pink Radiance**—Silver pink, free bloomer, one of the best. **Red Radiance**—Deep red, free bloomer and a good one. **White Kellarney**—Pure white. **Pink Kellarney**—A large bloom, pink in color. **White La France**—White, a well known variety. **Edward Mawley**—Deep crimson, perfect formed flower. **Los Angeles**—Flame pink, shaded with yellow, vigorous. **Pink Cochet**—Very large, rich coral. **Mme. Chatenay**—Rose pink, pretty and popular.

ROSES (Climbing)

Paul's Scarlet Climber—A very large red bloom. **Silver Moon**—A beautiful large silvery white. **Dorothy Perkins**—Pink, in large cluster. **White Dorothy Perkins**—Same as the pink Dorothy Perkins, only white.

PRICES OF ROSES (F. O. B. ARP, TEXAS)

Budded, large plants \$0.50 each \$5.00 per dozen
 Budded, small plants .40 each 4.00 per dozen

ARP NURSERY COMPANY